



GlobalTime Electronic Co., Ltd

GTD-366

NTP – Clock Display

GlobalTime offers a wide range of NTP servers and NTP clocks, radio clocks, CDMA clocks. By providing accurate, real-time information, we keep schools, hospitals, airports, train stations, media houses, offices, financial institutes, military bases, public security bureaus and other governmental institutes informed and on the same stage. Our clocks are widely used in more than 60 countries or regions over the world.

Digital PoE clocks draw both power and time updates from your organization's Ethernet connection. PoE clocks are energy-efficient and eliminate the need for AC receptacles and the use of batteries. You'll love the hassle-free installation and maintenance of these synchronized clocks

Optional Functions:

There is additional charge for optional functions.

(1) We can add a built-in bell relay to the clock, then it can be connected to a bell and the bell can be programmed to ring at 30 different moments.

(2) We can add a temperature sensor or humidity sensor to the clock then it can display time, temperature, and humidity alternately.



Key Features:

- Can display date or text (Maximum static text display: 13 characters, If text is over 13 characters,
- choose to roll, or alternate
- Time is automatically set by Simple Network Time Protocol (SNTP) - no master clock or serial connection required.
- Uses PoE (Power over Ethernet) for easy installation and operation
- Static IP or DHCP addressing
- Display time in 12 or 24 hours format
- Supports any time zone.
- Supports countdown function
- Automatic daylight saving time
- Environmentally friendly: the light intensity of the digits is adjustable by the software
- Provides NTP server configuration.
- If connection to NTP server is lost the clocks will continue to run on the built-in time base. When the connection is restored it will synchronize automatically.
- Can be single sided (has one display screen) or double sided (has two display screens)
- Mounting options: pendant, cantilever, surface
- Alarm Function is optional
- Temperature and Humidity display is optional
- Protocol support:
 - RFC 1119/1305 NTP v2/v3/v4
 - RFC 1769/2030 SNTP v2/v3/v4
 - DHCP

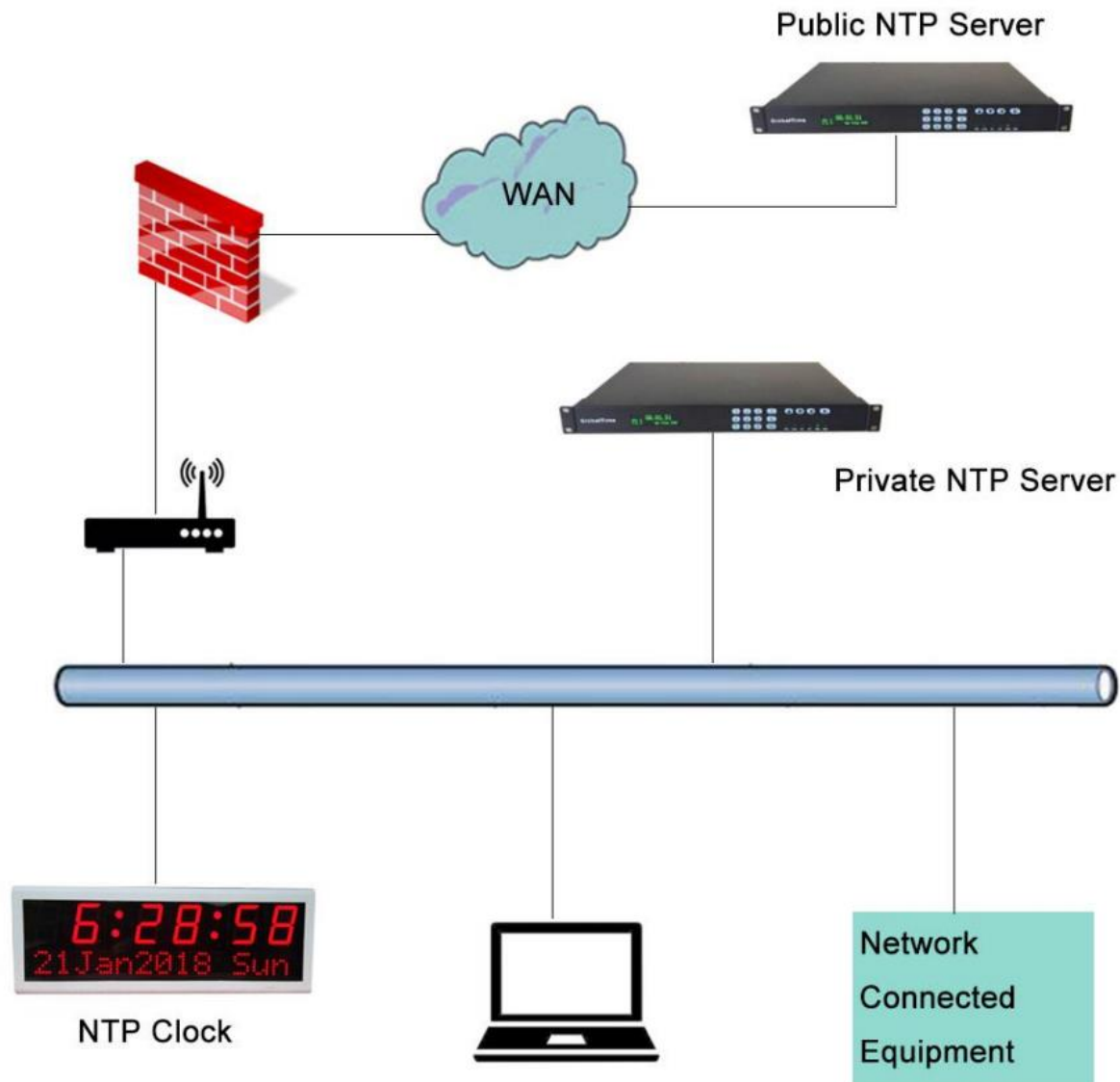
Distributed by.

PT. YASA PERSADA DEWANTARA

Office: Graha Krama Yudha, 4th floor Unit-B Jl. Warung Jati Barat No.43 Jakarta 12760

Direct Calls / WhatsApp: +62 818 8020 45

Projects & Application



Applications:

Synchronized Time Systems for:

- Offices and home
- Healthcare
- Education (military schools)
- Manufacturing
- Insurance companies
- Financial institutes
- Transportation
- Government

Mechanical/Environmental:

- Case: Metal in Black or White
- Size: 43cm x 15.5cm x 6.3cm, Weight: 2kg
- Power: 12V/DC 2A or PoE Support
- Display: 2.3 inch digit (56mm character), 8*8 dot matrix (38mm high)
- Viewing Distance: 50 feet - 15 meters
- Mounting Options: pendant, cantilever, surface Power Consumption: less than 10W
- Operating temperature: -10°C~65°C
- Storage temperature: -40°C~85°C
- Operational humidity: 0~90%

Others Model



GTD368-4SR



GTD368-6SR3



GTD368-6SR4



GTD368-4SB



GTD368-6SB3



GTD368-6SG4



GTD368-4SW



GTD368-6SW3



GTD368-6SW4



GTD368-4SG



GTD368-6SG3



GTD368-6SG4